



HOLLY PRICE POWERED BY **exp** TM UK

@ holly.price@exp.uk.com

🌐 hollyprice.exp.uk.com

☎ 01904 373131

5, Beverley House Main Street, Fulford

£210,000

🛏️ 2 🪑 1 🚿 1

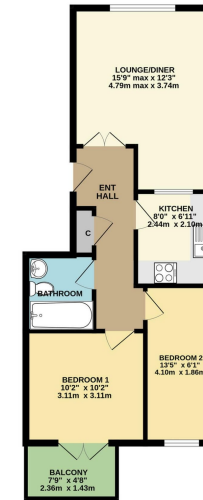


- Please quote HP0386 when requesting further information or to arrange a viewing
- Fielding Main Street Location
- Two Bedroom First Floor Apartment
- Allocated Parking Space
- Move Straight In Condition
- Lawned Communal Gardens
- Separate Kitchen & Lounge
- Light and Airy Rooms
- Move Straight In Condition





GROUND FLOOR
521 sq ft (48.4 sq m) approx.



TOTAL FLOOR AREA: 521 sq ft (48.4 sq m) approx.
These plans are intended to be used as a guide only. The dimensions of the property are approximate and may vary slightly from those shown on the plans. The area for the finished ground floor is shown in green. The area for the finished first floor is shown in yellow. The area for the finished second floor is shown in orange. The area for the finished third floor is shown in red. The area for the finished fourth floor is shown in pink. The area for the finished fifth floor is shown in purple. The area for the finished sixth floor is shown in blue. The area for the finished seventh floor is shown in light blue. The area for the finished eighth floor is shown in very light blue. The area for the finished ninth floor is shown in white. The area for the finished tenth floor is shown in light grey. The area for the finished eleventh floor is shown in medium grey. The area for the finished twelfth floor is shown in dark grey. The area for the finished thirteenth floor is shown in black.

Boasting a fantastic Fulford location, this purpose built, modern, first floor apartment offers any buyer great living space with a bright kitchen, allocated parking space and it's own private balcony, overlooking Fulford and beyond. Welcome to Beverley House.

Score	Energy rating	Current	Potential
92+	A		
81-91	B		
69-80	C	74 C	77 C
55-68	D		
39-54	E		
21-38	F		
1-20	G		